



International Model Forest Network  
LANDSCAPES • PARTNERSHIPS • SUSTAINABILITY



# Partnerships to Success in Sustainable Forest Management

*Model Forests Making a Difference to  
SFM: 1995 - 2005*


Peter Besseau  
Executive Director  
International Model Forest Network Secretariat

May 17, 2005  
UNFF5  
New York

# *This Afternoon's Panel:*

 **Romeo Acosta**, Director, Forest Management Bureau, Department of Environment and Natural Resources, Philippines

**Olga Corrales**: General Manager, Regional Model Forest Network, Latin America and the Caribbean

 **Brian Wilson**, Director of Programs, Natural Resources Canada – Canadian Forest Service, Chair of the Canadian Model Forest Network

 **Peter Besseau**, Executive Director, IMFN Secretariat



# *Model Forests & the UNFF:*

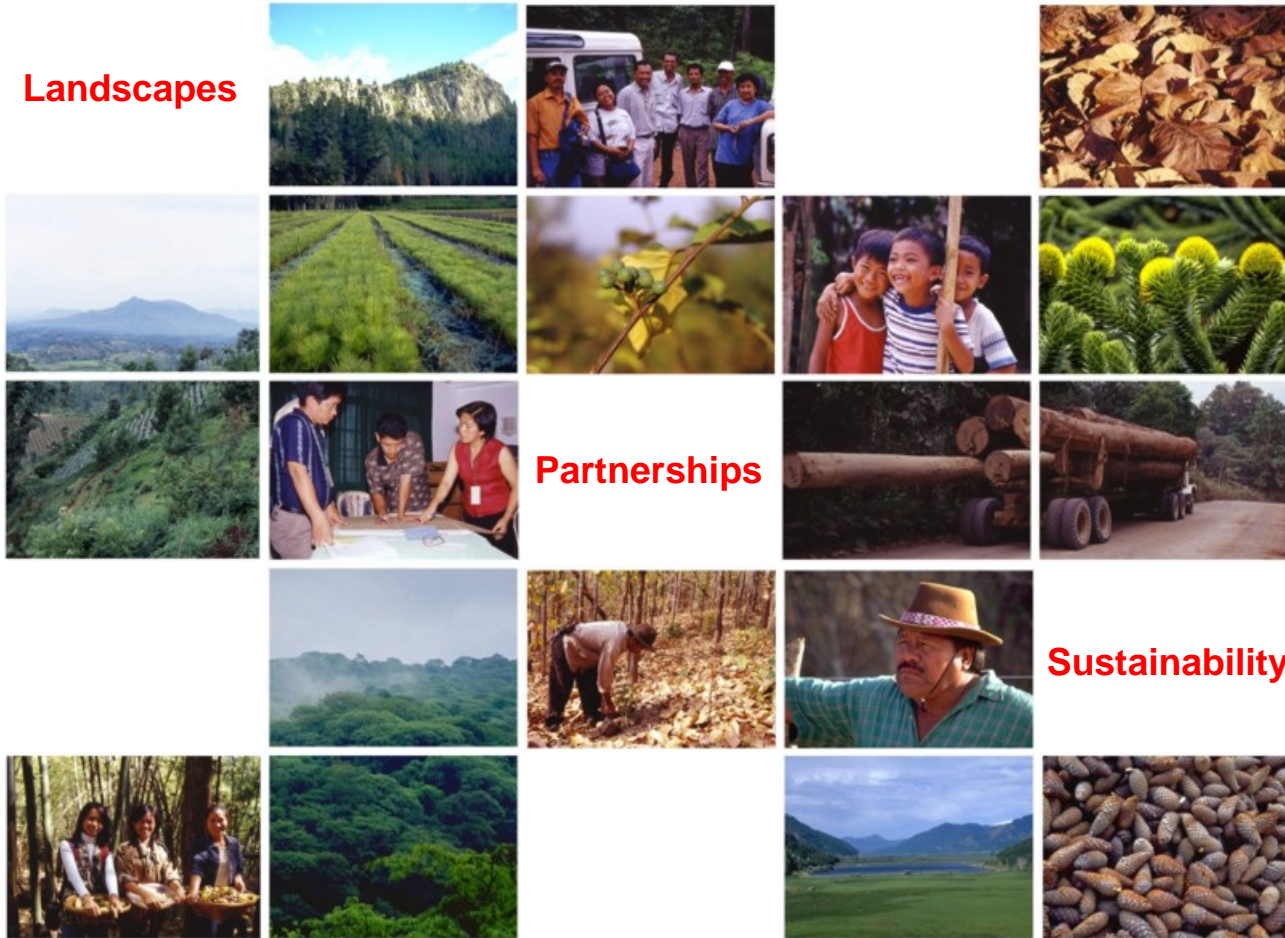
- 🌲 A dynamic, global initiative supporting SFM
- 🌲 Making real contributions
- 🌲 Developing new opportunities to accelerate SFM





# *Much More Than Trees...*

## Landscapes



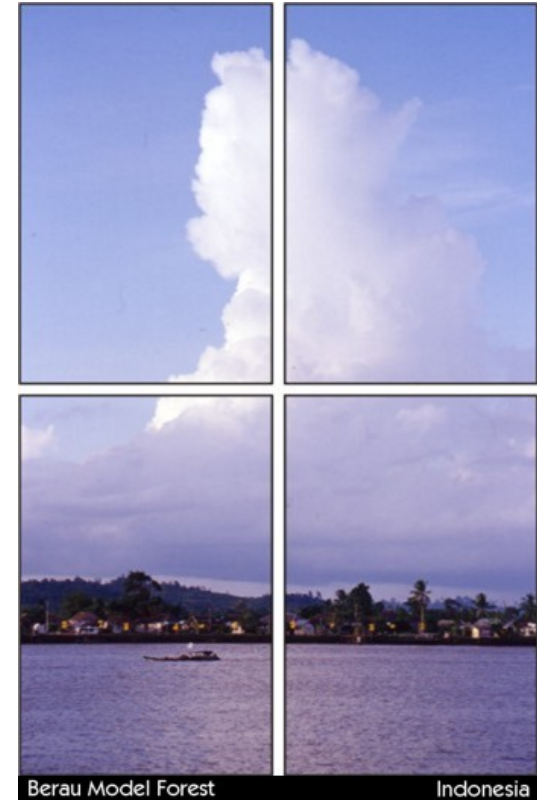
## Partnerships

## Sustainability



# *Unique Features:*

- 🌳 Large landscapes/multiple uses
- 🌳 Broad, inclusive partnerships
- 🌳 Deliberate link to policy level
- 🌳 No executive authority over the land-base
- 🌳 Not prescriptive – driven by the partnership
- 🌳 Networking from local to international levels
- 🌳 Multiple sources of support
- 🌳 Natural and social sciences



# *Role of Model Forest:*

- ✻ To define and deliver SFM at the landscape-level on the basis of inclusive partnerships.



Margowitan Model Forest

Indonesia





**Argentina**  
1 Formoseño  
2 Futaleufú  
3 Jujuy  
4 Neuquén

**Brazil**  
5 *two sites under development*

**Cameroon**  
6 *two candidate sites selected*

**Canada**  
7 McGregor  
8 Foothills  
9 Prince Albert  
10 Manitoba  
11 Lake Abitibi  
12 Eastern Ontario  
13 Waswanipi Cree  
14 Bas-Saint-Laurent  
15 Fundy  
16 Nova Forest Alliance  
17 Western Newfoundland

**Chile**  
18 Araucarias del Alto Malleco  
19 Chiloé  
20 Panguipulli

**China**  
21 Lin'an

**Costa Rica**  
22 Reventazón

**Dominican Republic**  
23 Sabana Yegua

**France**  
24 *expression of interest*

**India**  
25 Kodagu

**Indonesia**  
26 Berau  
27 Margowitan

**Japan**  
28 Kyoto

**Mexico**  
29 Mariposa Monarca  
30 Sierra de Quila

**Philippines**  
31 Ulot Watershed

**Russia**  
32 Gassinski  
33 Komi  
34 Kovdozersky

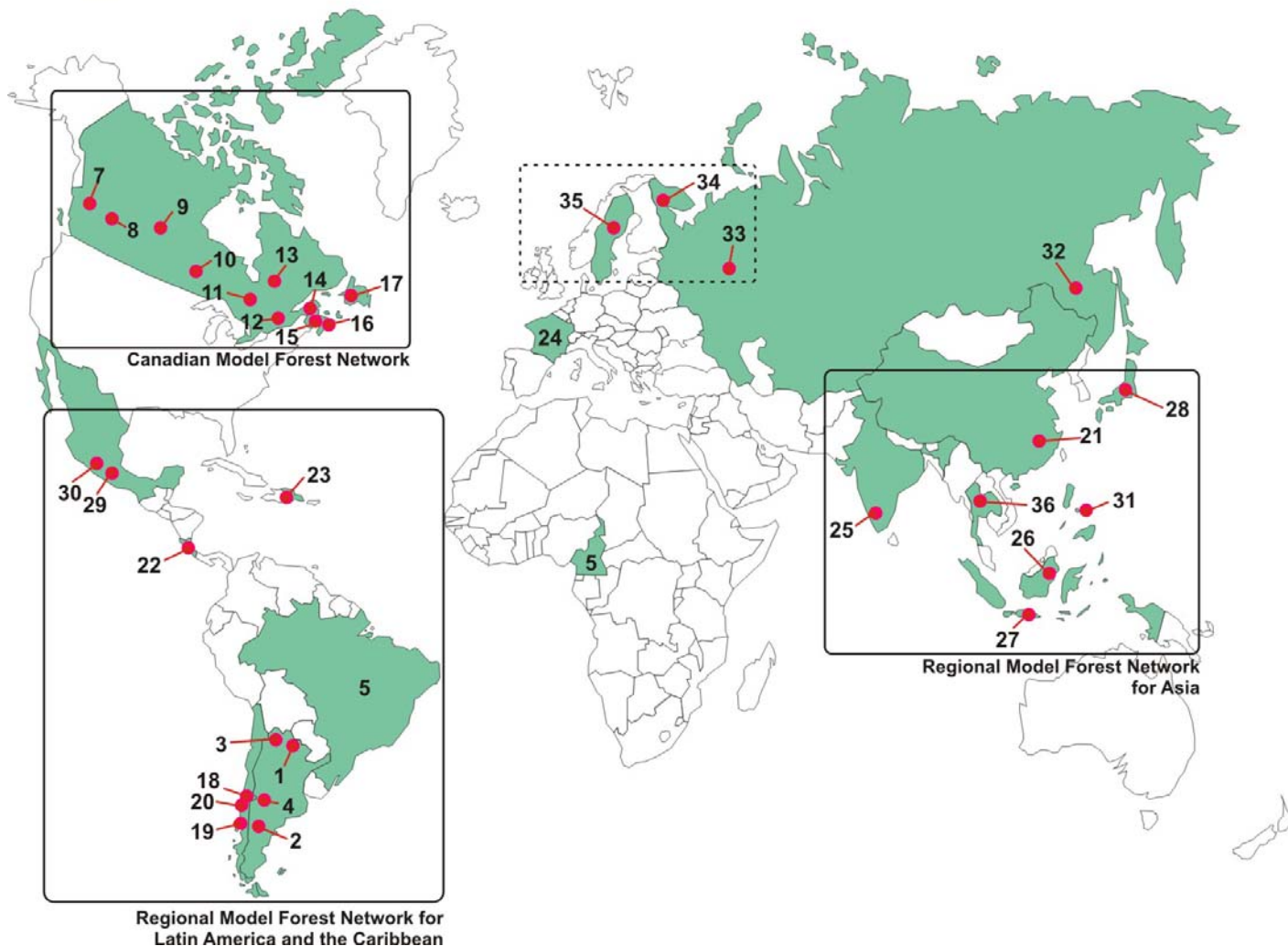
**Sweden**  
35 Vilhelmina

**Thailand**  
36 Ngao

*\* under development*



# INTERNATIONAL MODEL FOREST NETWORK



April 2005

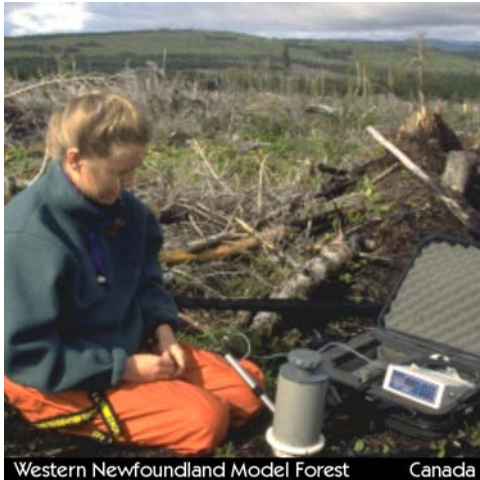


## International Model Forest Network

LANDSCAPES • PARTNERSHIPS • SUSTAINABILITY



# Real Contributions:



## Governance

- Participatory processes, conflict mitigation



## Sustainable economic opportunity

- Sustainable forestry, alternative opportunities



## Environmental protection

- Conservation, preservation, stewardship



## SFM science and best practices

- Research, application, demonstration, and training



## Knowledge-generation

- Networking and training



## Leveraging resources





# *Role of Model Forest Network:*

- ✻ To accelerate innovation by facilitating exchange of people, ideas, technologies, knowledge, and innovation.



Lin'an Model Forest

China



# *IMFN Participants:*



- Have access to expertise
- Provide expertise
- Collaborate on issues of joint interest
- Share information and exchange ideas

- Leverage each others' resources
- Contribute field-level expertise to support a global community of best practices



International Model Forest Network

LANDSCAPES • PARTNERSHIPS • SUSTAINABILITY



# Model Forest Partnerships:

- 🌳 1,000+ field-level partners
- 🌳 Country/national-level partners
- 🌳 Numerous institutional partners at site, regional, and international levels, including:

- FAO (Asia, LAC, Africa)
- UNDP-GEF (LAC & Asia)
- CUSO (LAC)
- CIFOR
- CIDA
- USAid
- RECOFTC
- INBAR
- JICA
- CATIE





# *Experiences From:*

- 🌲 Asia
- 🌲 Latin America and the Caribbean
- 🌲 Canada



# Overview of Partnerships to Success CD:

🌲 Highlights of 10-year anniversary publication: 1995 – 2005

🌲 Showcases examples in five main areas of impact:

- Governance, including conflict mitigation
- Sustainable economic opportunity
- Forest-science and best practices
- Conservation and protection
- Knowledge sharing and networking



Lin'an Model Forest

China



Margowitan Model Forest

Indonesia



# Looking Ahead:

- 🌳 Potential for five regional, autonomous networks, internationally linked
- 🌳 A global network of 50+ model forests
- 🌳 A global community of practice linked to policy levels
- 🌳 Efficient/relevant movement of knowledge, expertise and innovation





# Looking Ahead:

- 🌲 Link over 1000 operationally-based partner organizations dealing in virtually any aspect of SFM
- 🌲 50+ landscape level platforms for integrated research, demonstration, or training on any aspect of SFM: climate change; Governance; Illegal logging; Boreal; Temperate; Tropical...



Futaleufú Model Forest

Argentina





# IMFN



- 🌳 An innovative workable mechanism to make progress toward SFM
- 🌳 A global community of practice
- 🌳 An opportunity to share & access expertise directly/ efficiently
- 🌳 Acting locally and globally

