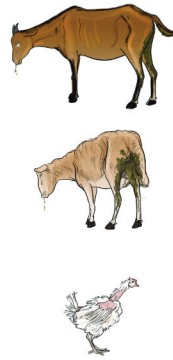
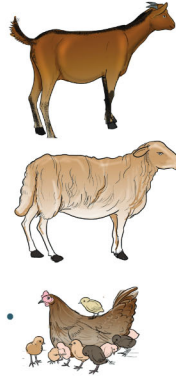
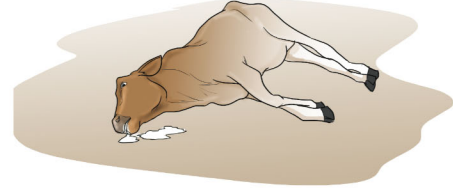


# APOR I KOM LEENI NA KOM GI YOT KI MAN NA TUO

- Lee na kome yot tek eka yer kome leng na ryeny.
- Lee na kome yot chemo eka motho abonge ayela moro keken.
- Lee na kome yot wange leng, tyene eka opuny tyene leng.
- Lee na kome yot yweo na ber eka bedo ikin leeni nokene.

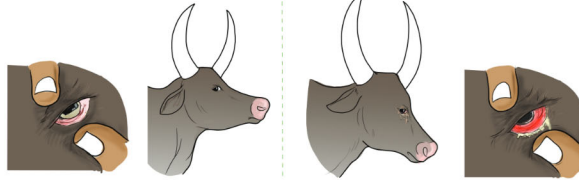


- Lee na tuo yer kome gwau eka nongo pol kare gin moro mol ki wume, chyet mol ki dude.
- Lee na tuo ope ki teko moro eka nongo wange ba neno naber, eka wie nongo cha ducu okule ping.
- Lee na tuo romo bedo ki bur kany moro keken ki kome.
- Lee na tuo nongo yweo mere tek eka pokere oko ki kin leeni nokene.



## • Wang

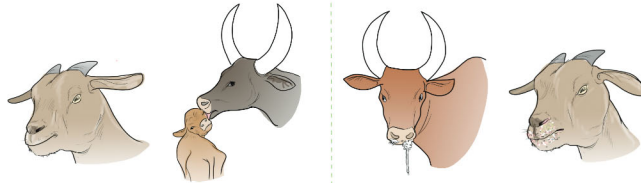
- Wang leeni na kom gi yot nongo ryeny na leng eka nongo rangi me wange nyang eka leng.
- Pol kare nongo leng abonge pi wang gi onyo gin moro keken na mol ki theng wang gi.



- Leeni na tuo nongo wang gi ochek na kwar; wang na kwar obedo anyuth achel me tuo I kom leeni.
- Ka pii wang gi mol na pek nongo weko yabo wang leeni tek.

## • Dhog

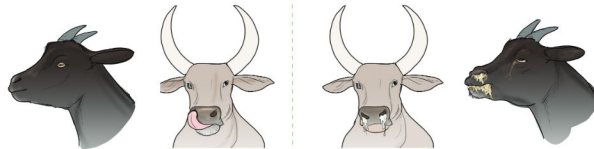
- Lee na kome yot nongo thoge ki wange leng eka nongo lao dhoge ba mol.



- Lee na tuo nongo del dhoge pek eka oware nongo pii mol ki dhoge eka ngweche tik/rach.
- cha nokene ajeme tye i dhoge onyo dhoge nwango odhugo moko na olungere na thino nongo tye i dhoge; chalo dyel na tuo lokio eka lojad (PPR) omako nongo tye ki ajeme nonu.

## • Wume

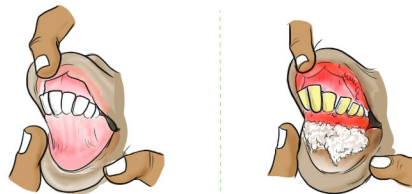
- Lee na kome yot nongo wume leng eka ba mol.
- I akina rom eka dyegi, wum gi mito obed na ngich eka na othwo.
- Leeni na kom gi yot maro noth wum gi ki leb gi.



- Leeni na tuo pol kare nongo wum gi mol/chwer; wum gi na chwer ni nongo nwang eka ngweche tik.
- Dyel na tuo Chado ka rom ki dyegi (PPR) omako nongo wume mol/chwer.

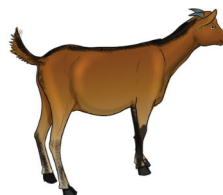
## • Tyen lak

- Tyen lak na ber ba nyutho gin na kwar eka nongo ba okwat.
- Tyen lak na ber pol kare nongo rangi mere tye na nyang eka nongo lak gi tek.



- Tyen lak leeni na tuo nongo kwar eka odeng.
- Dhog lee na othwo eka nongo nwang nyutho ni pii nonok/tidi ikome.
- Kare moko, dhoge nongo tye ki ajeme na chwer remu eka nongo ngweche rach.

- Lee na kome yot nongo del kome leng eka ryeny kun nongo gin moro na mol ki pyere/dude ope.
- Lee nongo tuko rwok eka othing.



- Lee na tuo pol kare nongo olidere, teko ope eka nongo obuto ping.
- Pyere/dud lee nongo cha ducu opong ki chyet.