

Myanmar



RESEARCH PROGRAM ON
**Climate Change,
Agriculture and
Food Security**



Climate Smart Villages (CSVs): Platforms for Scaling Out Climate Smart Agriculture and Community-based Adaptation in Myanmar

Name: Wilson John Barbon

Position: Country Director, IIRR Myanmar



International Development Research Centre
Centre de recherches pour le développement international



Myanmar at a Glance



RESEARCH PROGRAM ON
Climate Change,
Agriculture and
Food Security



• Socio-Political

- Land area: 676,577 km²
- Population roughly 53 million
- Two capitals Yangon (business) and Naypyidaw (government)
- Poverty rate: 25%, Food insecure: 10%

• Agriculture

- Agriculture contributes to 34% of the GDP
- Rural population is 75% mostly in farming
- Only 13% of farms are irrigated

• Climate Change

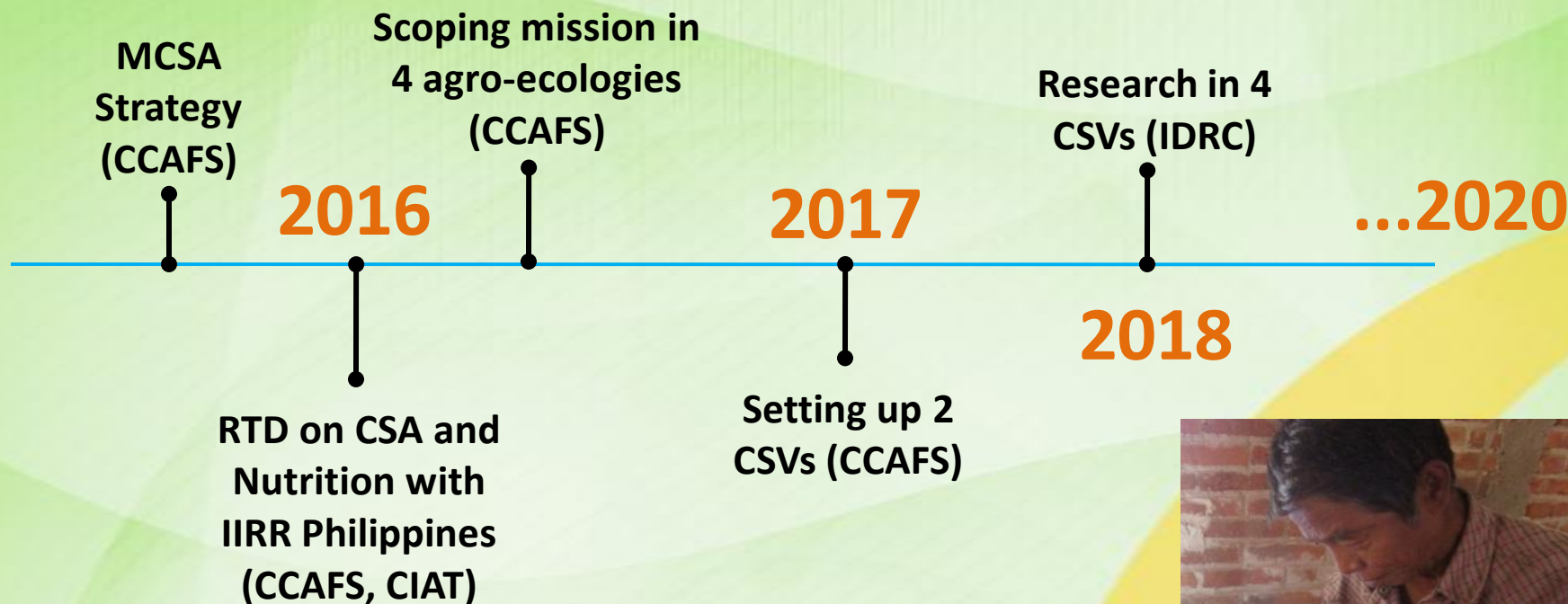
- 3 seasons (rainy, winter and summer)
- Increased temperatures (0.08 C) and fewer cold days and frequent hot days
- Start of monsoon 1-2 weeks late than normal, withdrawals at 7-19 days earlier
- Shorter rainfall durations



Background



RESEARCH PROGRAM ON
Climate Change,
Agriculture and
Food Security



CSA/CSV timeline in Myanmar



IDRC | CRDI

International Development Research Centre
Centre de recherches pour le développement international



Research Themes and Questions



RESEARCH PROGRAM ON
**Climate Change,
Agriculture and
Food Security**



What are the ways to optimize CSA and CBA processes in four different agro-ecological and socio-cultural settings in Myanmar?

- Cross-site analysis to highlight common and differentiated approaches
- Resources and mechanisms to support CBA at village level in Myanmar
- Leveraging nutrition and food security via CSA
- Opportunities for women economic and social empowerment of women within CSA and CBA

What mechanisms and social learning process can be adopted in Myanmar to scale-out CBA and CSA?

- farmer to farmer approaches
- strengthening local extension and linkages with local research stations

How are current mechanisms and programs of government, academia and civil society serve as pathways towards scaling-out CBA and CSA?

- via Capacity development of local NGOs
- via Learning events with government, academia and CSOs
- via Myanmar-specific publications

Methodology



RESEARCH PROGRAM ON
Climate Change,
Agriculture and
Food Security



- ### Potential Next Users
- Government (Union & Sub-Union)**
 - Advocacy and dialogue with government
 - Capacity development via training and learning exchanges and field days
 - Civil Societies (LNGO/INGOs)**
 - Engagement with existing NGO working groups (SUN, FSWG)
 - Capacity development via training and learning exchanges
 - Academia/Research Agencies**
 - Developing research studies with Yezin Agriculture University
 - Promoting CSVs as sites for programs of the Department of Agricultural Research (DAR)

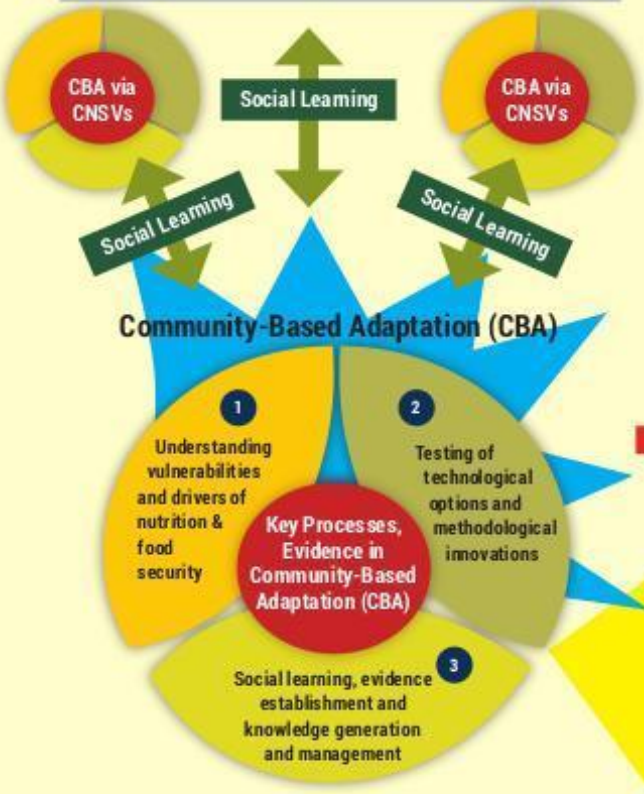
IMPACT:
Resilience in Agriculture, Food Security, and Nutrition

Scaling-Out Outcomes:

- Enabling environment supportive of climate resilient, gender sensitive and nutrition friendly agriculture
- Strengthened government policies, programs, and investments supporting climate resilient agriculture
- Increased adoption and mainstreaming of CRA within development programs of civil societies
- Sustained engagement between research institutions and local communities thus influencing research for development (IR4D) activities

Village-Level Outcomes:

- Increased adaptive capacities of smallholder-farmer households, improved food security, livelihoods and nutrition outcomes of farm and homestead scales
- Increased farm productivity, reduced risks and enhanced resilience



Drivers of Food Insecurity and Vulnerability in Myanmar
(1) Climate Variability, (2) Climate Extremes, (3) Poverty, (4) Gender Inequalities, and (5) Landlessness



Key outputs

- **Scoping Study of 4 Agro-Ecologies**

- Site visits and focus group discussions in mountain, hilly, dry zone and delta agro-ecologies
- WP: Promotion of CSVs to Support CBA in Myanmar

- **Baseline studies**

- Desk reviews
- Household surveys in 4 CSVs (N=500++ HH)
- PVAs and FGDs
- Report to be ready by February 2019

- **Publications**

- Blogs in the CCAFS website (3-4 blogs)
- CSV profiles for each CSV (wip)
- CSV Portfolio (wip)
- Primer on CSVs in Myanmar



RESEARCH PROGRAM ON
**Climate Change,
Agriculture and
Food Security**



Key outputs



• Farm-level testing of options

- Participatory adaptive research crop trials
- Crop intensification and diversification: resilience building
- Agro-biodiversity conservation of crops/varieties and livestock and
- Addressing land degradation through agro-forestry

• Homesteads

- Intensification with fruits and small livestock
- Bias towards female-headed HH
- Low carbon footprint small livestock (pigs, ducks and fish)
- Multi-story cropping

• School level testing of options

- Conservation site for resilient crops of nutritional importance
- Platform for nutrition and environment education
- Serve as fodder banks for dry season needs

Emerging outcomes

- **Government (MOALI)**

- Initial linkages between DAR researches and CSV activities
- Initial engagement with local DoA for promoting CSA in extension

- **Academe (YAU)**

- Strengthening of newly established National CSA Center at YAU (materials and academic meetings)

- **Civil Society (FSWG)**

- Initial capacity development started for the members of the WG (CSA seminar, study program to Guinyangan CSV in Philippines)



RESEARCH PROGRAM ON
**Climate Change,
Agriculture and
Food Security**



Future activities

• CSA/CBA in the CSV

- Conduct 2 seasons of technology testing based on the baseline studies
- Action research on gender and nutrition in the CSV

• Capacity Development and Policy Influence

- National CSA/CSV Training course in 2019
- National and Regional Conference on CSA/CSVs

• Publications

- Primers on leveraging nutrition and CSA opportunities for gender empowerment
- 3 Working Papers as follows:
 - Evidence-base for CSVs as platform for CBA
 - Leveraging nutrition and opportunities for gender
 - Pathways to scaling out CSA/CBA in Myanmar



RESEARCH PROGRAM ON
**Climate Change,
Agriculture and
Food Security**





RESEARCH PROGRAM ON
**Climate Change,
Agriculture and
Food Security**



Thank you!

**For more information, please
contact:**

Name: WILSON JOHN BARBON
Office: International Institute of Rural
Reconstruction (IIRR)-Myanmar

Address: 114 Dana Theikdi St, Mayangone
Tsp, Yangon

Email: wilsonjohn.barbon@iirr.org

Website: www.iirr.org



IDRC | CRDI

International Development Research Centre
Centre de recherches pour le développement international

Canada